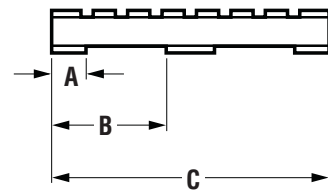


GENERAL DATA & STANDARD DIMENSIONS

Battery Compartment Dimensions

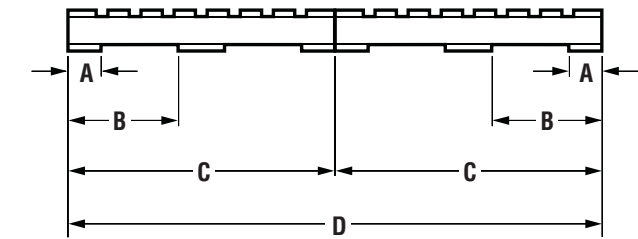
	Width (W) inches	Length (L) inches	Height (H) inches
Small	35.5	7.0	All
Large	31.4	13.6	All

Fork Lengths and Pallet Dimensions (in)



A - Bottom board width
B - Minimum clearance for wheel drop from end of pallet
C - Pallet length

For Single Pallet Handling Fork Length	A	B	C
41.63	6	15	42
47.63	6	15	48
59.63	6	15	60
71.63	6	15	72
95.63	6	15	96



A - Bottom board width
B - Minimum clearance for wheel drop from end of pallet
C - Pallet length
D - Double load length

For Double Pallet Handling Fork Length	A	B	C	D
84/93/96	6	15	48	96

Notes

Performance may vary +5% and -10% due to motor and systems efficiency tolerance. The performance shown represents nominal values which may be obtained under typical operating conditions with a standard machine.

ANSI/ITSDF and Insurance Classification

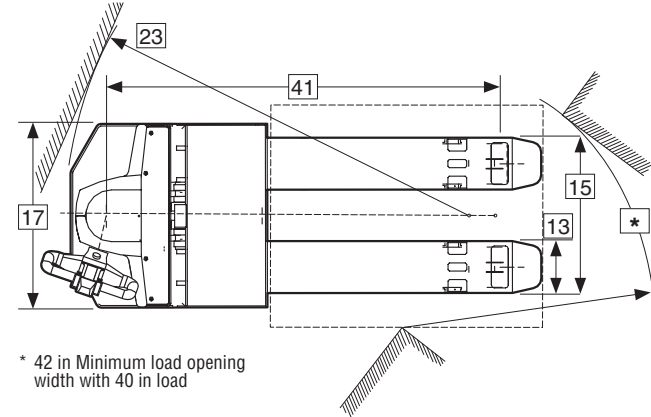
Standard truck meets all applicable mandatory requirements of Part III-ANSI/ITSDF B56.1 Safety Standard for Powered Industrial Trucks (latest edition at time of manufacture) and Underwriters Laboratories requirements as to fire and electrical shock hazard only for "E" classification. For further information contact a Clark representative.

Users should be aware of, and adhere to, applicable codes and regulations regarding operator training, use, operation and maintenance of powered industrial trucks, including:

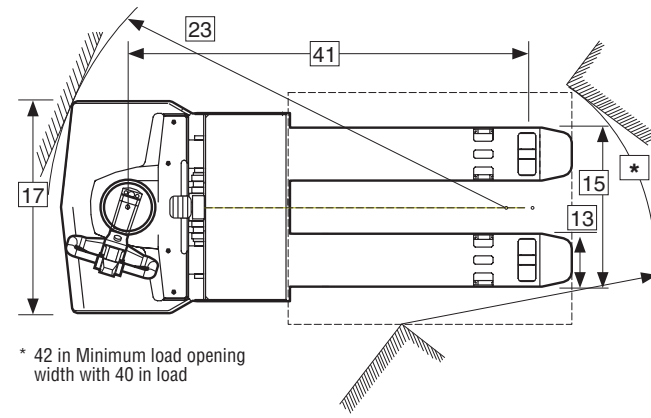
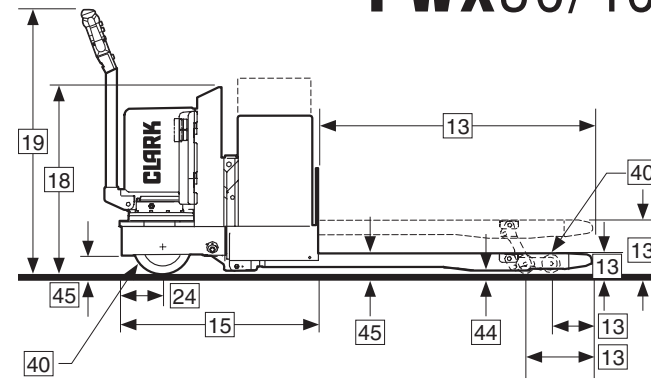
- ANSI/ITSDF B56.1
- NFPA 505, fire safety standard for powered industrial trucks - type designations, areas of use, maintenance and operation.
- Occupational Safety and Health Administration (OSHA) regulations that may apply.

Contact your authorized CLARK forklift truck dealer for further information including operator training programs and auxiliary visual and audible warning systems, fire extinguishers, etc., as available for specific user applications and requirements.

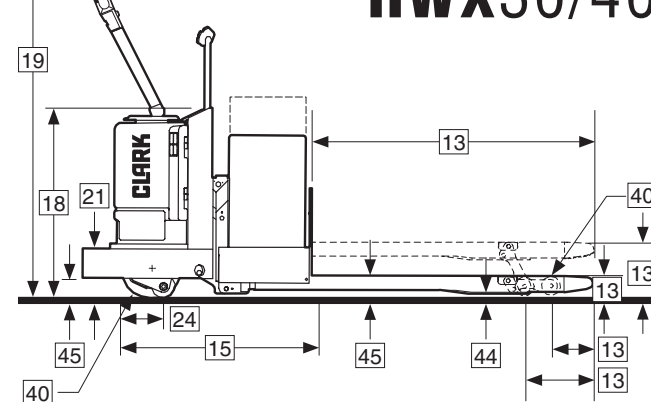
Specifications, equipment, technical data, photos and illustrations are based on information at time of printing and are subject to change without notice. Some products may be shown with optional equipment.



PWX30/40



HWX30/40



For corresponding data see Specification Chart

STANDARD SPECIFICATIONS

		Clark	Clark	Clark	Clark		
		HWX30	HWX40	PWX30	PWX40		
General Information	1 Manufacturer	Clark		Clark			
	2 Model	Manufacturer's Designation		Manufacturer's Designation			
	3 Load Capacity	lbs(kg)	6000 (2720)	8000 (3630)	6000 (2720)	8000 (3630)	
	4 Load Center	Fork Face Load CG	in(mm)	24 (600)	24 (600)	24 (600)	24 (600)
	5 Power Unit	Electric	24 volt	24 volt	24 volt	24 volt	
	6 Operator Type		Ride-walk/low lift/pallet	Ride-walk/low lift/pallet	Walk/low lift/pallet	Walk/low lift/pallet	
	7 Tire Type	Drive/Steer - load	Rubber - Urethane	Rubber - Urethane	Rubber - Urethane	Rubber - Urethane	
	8 Wheels (x=driven)	Front/Rear	1x / 2	1x / 2	1x / 2	1x / 2	
Basic Dimensions	13 Fork	Lift height to top of fork	in(mm)	9.25 (235)	9.25 (235)	9.25 (235)	9.25 (235)
		Lowered height at heel/toe	in(mm)	3.50/3.25 (89/83)	3.50/3.25 (89/83)	3.50/3.25 (89/83)	3.50/3.25 (89/83)
		Thickness	in(mm)	2.38 (60)	2.38 (60)	2.38 (60)	2.38 (60)
		Width ¹	in(mm)	9.0 (229)	9.0 (229)	9.0 (229)	9.0 (229)
		Usable length ²	in(mm)	47.63 (1210)	47.63 (1210)	47.63 (1210)	47.63 (1210)
		Fork tip to load wheel ctr. - lowered	in(mm)	7.17 (182)	7.17 (182)	7.17 (182)	7.17 (182)
	15 Overall Dimensions	Fork tip to load wheel ctr. - raised	in(mm)	11.38 (289)	11.38 (289)	11.38 (289)	11.38 (289)
		Length to Fork Face ³	in(mm)	32.8/38.8 (833/986)	32.8/38.8 (833/986)	28.27/34.27 (718/870)	28.27/34.27 (718/870)
		Overall width, forks	in(mm)	27.0 (686)	27.0 (686)	27.0 (686)	27.0 (686)
		Width ³	in(mm)	36.0/32.0 (914/813)	36.0/32.0 (914/813)	36.0/32.0 (914/813)	36.0/32.0 (914/813)
		17 Height	in(mm)	32.39 (823)	32.39 (823)	32.39 (823)	32.39 (823)
		18 Handle Height	Ground to tip of released handle	in(mm)	56.7 (1440)	56.7 (1440)	48.0 (1220)
Chassis	19 Step Height	Ground to top of step plate	in(mm)	8.5 (216)	8.5 (216)	N / A	N / A
	23 Turning Radius	With 48Lx40W pallet raised ³	in(mm)	68.9/74.9 (1750/1902)	68.9/74.9 (1750/1902)	64.6/70.6 (1641/1793)	64.6/70.6 (1641/1793)
		With 48Lx40W pallet lowered ³	in(mm)	73.3/79.3 (1862/2014)	73.3/79.3 (1862/2014)	69.1/75.1 (1755/1908)	69.1/75.1 (1755/1908)
	24 Head Length	Front of frame to center of drive tire	in(mm)	11.6 (295)	11.6 (295)	7.14 (181)	7.14 (181)
		25 Right Angle Stack Aisle (Add 6-8" Operating Clearance)	With 48Lx40W pallet raised ³ With 48Lx40W pallet lowered ³	in(mm)	75.9/81.9 (1928/2080) 81.8/87.8 (2078/2230)	75.9/81.9 (1928/2080) 81.8/87.8 (2078/2230)	69.4/75.4 (1763/1915) 73.2/79.2 (1859/2012)
Wt. Perform.	28 Speeds	Travel Speed, Max w/ Load	mph(kph)	6.4 (10.4)	6.1 (9.8)	3.3 (5.3)	3.1 (4.9)
	29	Travel Speed, Max w/o Load	mph(kph)	8.4 (13.5)	8.4 (13.5)	4.0 (6.4)	4.0 (6.4)
Chassis	34 Service Weight	Including battery ³	lbs(kg)	1800/2039 (816/920)	1860/2280 (843/1034)	1370/1780 (620/807)	1440/1850 (653/839)
	39 Tires	Number, Front/Rear		1 / 2	1 / 2	1 / 2	1 / 2
		40 Size, Front	in(mm)	10.0 x 4.75 x 6.5 (254 x 121 x 165)	10.0 x 4.75 x 6.5 (254 x 121 x 165)	10.0 x 4.75 x 6.5 (254 x 121 x 165)	10.0 x 4.75 x 6.5 (254 x 121 x 165)
	41 Wheelbase	Size, Rear	in(mm)	3.25 x 5.75 (83 x 146)	3.25 x 5.75 (83 x 146)	3.25 x 5.75 (83 x 146)	3.25 x 5.75 (83 x 146)
		Size, stabilizing casters	in(mm)	4.0 x 2.5 (102 x 64)	4.0 x 2.5 (102 x 64)		
	44 Ground Clearance	With forks lowered ³	in(mm)	61.6/67.6 (1565/1717)	61.6/67.6 (1565/1717)	61.6/67.6 (1565/1717)	61.6/67.6 (1565/1717)
		45 Minimum without Load	in(mm)	.125 (3)	.125 (3)	.125 (3)	.125 (3)
		At center of wheelbase	in(mm)	0.88 (22)	0.88 (22)	0.88 (22)	0.88 (22)
		At front of frame	in(mm)	3.5 (89)	3.5 (89)	3.5 (89)	3.5 (89)
	46 Service Brake	Type		Regenerative	Regenerative	Regenerative	Regenerative
47 Parking Brake		Actuation		Auto-Electro magnetic	Auto-Electro magnetic	Auto-Electro magnetic	
Drive Line	48 Battery	Type		Lead acid	Lead acid	Lead acid	
		Max. capacity (6 hr. rate) ³	kwh	7.7 / 21.5	7.7 / 21.5	7.7 / 21.5	
		Weight, minimum ³	lbs(kg)	456/821 (207/373)	456/821 (207/373)	456/821 (207/373)	
	Weight, maximum ³	lbs(kg)	575/1461 (261/664)	575/1461 (261/664)	575/1461 (261/664)		
	49 Motors, Controls	Drive motor, diameter	in(mm)	6.89 (175)	6.89 (175)	6.10 (155)	6.10 (155)
		Hydraulic motor, diameter	in(mm)	4.5 (114)	4.5 (114)	4.5 (114)	4.5 (114)
Drive motor control			Inverter	Inverter	Inverter		
Speed control		Solid state	Solid state	Solid state			
Hydraulic motor control		Contactactor	Contactactor	Contactactor			
57 Hydraulic Pressure	For lift	psi	2300	2300	2300		

Notes: 1 Forks longer than 54 in. (small compartment) and 48 in. (large compartment) are 9.13 in. wide.
2 Other fork lengths available, see general data.
3 Specifications shown for small/large battery compartment models.